



Citizens of Shawtown Camp Workcoeman Winter 2019 Newsletter



Chairman	Brian Cornell	860-806-0390	bcornell@campworkcoeman.org
Camp Director	Lou Seiser	860-806-0751	lseiser@campworkcoeman.org
Camp Ranger	Frank Galliher	860-379-2207	Rangerfrank@campworkcoeman.org
Membership	Keith Zwart	860-459-2026	keith.zwart@gmail.com

Camp Director's message...

Greetings and Happy Winter!

This time of year allows us to reflect on the 2019 summer camp season as we prepare to do it all over again in 2020. That's the way it has been for 95 years at Workcoeman. The camp season was highlighted by celebrating Workcoeman's 95th anniversary. A special gathering of camp alumni was held to see old friends and reminisce about the great times spent at camp.

Once again, hundreds of Scouts entered the gates of Camp Workcoeman and came away with a Scouting experience that will last for a lifetime. New in 2019 was the addition of new docks for the swimming and fishing areas, underwater drones and log rolling events that were obtained by a special grant.

Scouting happens year-round and involves a great number of people. Dedication is the common ingredient those that make it happen. My heartfelt gratitude goes out to the members of the summer camp staff who spend their summer giving far more than they get in return. Camp Workcoeman is blessed to have the dedication of the volunteers of the Citizens of Shawtown, who continue to make improvements to the camp facility as well as the many volunteers who provide programs throughout the year. This on-going process of dedicated volunteers is the life blood of what makes Workcoeman such a special place.

THANK YOU to all of you who dedicate your time and effort to Camp Workcoeman! I wish you a happy and healthy holiday season as well and all the best for 2020!

Lou Seiser, Camp Director



Will Sanford and Gary Pecora tackle wood-splitting chore at Griffin Lodge



Will Sanford, Ranger Frank, Brain Goodrich and Mark O'Connor plan strategy at the 11/23 workday



Mike Luedke works to assure Dining Hall roof is in good shape



Troop 138 of Naugatuck holds their annual Thanksgiving feast with the Scouts and parents in the Dining Hall on November 23. This is why the Citizens mission is so important so Scouts can enjoy our beautiful camp and facilities

EXTRA! EXTRA! READ ALL ABOUT IT!

Brian Cornell Accepts - Citizens of Shawtown has a new Leader!

Now a few words from our Shiny New Fearless Leader...

What a great year at Camp Workcoeman and what a great year for all of us who call ourselves the Citizens of Shawtown!

We grew in membership numbers this year, adding new hands and faces to our family. Our successes in 2019 were many and I thank all who joined us in making Camp Workcoeman a better place for Scouts and Scouters alike who enter our gates for a terrific and safe camping experience.

As your new Chairman I promise to make the Citizens an even better group and look forward to our Annual Meeting later this Winter as we plan for 2020 and beyond. We'll need many hands to assist Ranger Frank and Director Lou with camp needs. Also, we'll plan Shawtown fund-raising activities to keep ourselves in strong financial shape in order to support needs at camp and will plan to gather for fellowship more often in 2020.

Here's to 2020.... Happy Holidays from my home to yours!

Brian Cornell, Chairman, Citizens of Shawtown

~~~~~

#### ***Further news...***

With Brian moving to the Fearless Leader position, Keith Zwart has agreed to be the Chairman of the Membership Committee. Thank you Keith for taking on this job.

~~~~~

Rantings from our Ranger...

Merry Christmas and Happy New Year.

This year I am truly grateful for the amazing volunteers for the sacrifice and hard work. We could not have accomplished so much without your generous output of time and energy. Thank you to the committee chairpersons for their hard work on their committees and those individuals that spearheaded our fundraising efforts.

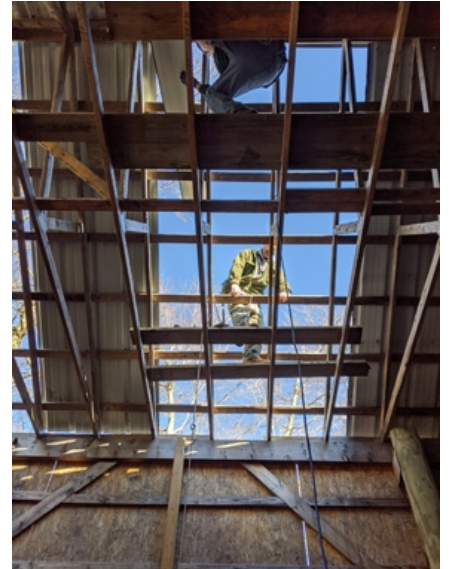
I look forward to working with all of you again in the New Year to keep Camp Workcoeman a strong foundation in our Scouting future.

Ranger Frank Galliher, Camp Workcoeman

~~~~~



Steve Seiser, Ron DiPietro and Bill Amone take a well-deserved break





## ***Welcome 2020!***

Preparing for even more in 2020..... We will be forming several active committees within the Citizens to make room for everyone who wants to add to our history. We'll be looking for Fundraising Committee volunteers, Social Committee volunteers and a trio of volunteers to assume the responsibility of planning, organizing and running our Annual Steak Dinner and Huge Silent Raffle. Please consider where you'd like to serve and let Brian Cornell know over the next two months so we can hit the ground running in the new year! - YIS, Brian

## ***Shawtown... Reading the History Part II***

Most forest types are identified by the dominant plant species of the area. In the case of Southern New England we live in an Oak/Hickory forest type. This does not mean that other species are absent, or even simply present in small numbers. It means that if all the forest trees were massed ("weighed") then the greatest portion of that mass would be due to oaks and hickories. Plants in general, and trees in particular, show patterns of growth which are in direct response to their environmental constraints. For example, when many hardwood trees are shaded out by others in their early life, they tend to grow straight and tall as they push their way to the forest canopy to get to the precious life-giving sunlight. Pines that develop this way are sometimes called "witch's brooms". Those same hardwood species, when seeded and grown in open areas, where sunlight is plentiful, tend to develop many large branches low on the trunk, spreading out in all directions.

The Shawtown area, and indeed most of Camp Workcoeman, is dominated by trees, tall and slender in nature, indicative of having been well forested for many years. However, in the center of Shawtown, near the largest of all the foundations/cellar holes, grow some enormous white pines. The initial Shawtown program of the 1980's was centered at the base of one of these pines. These pines are large, 36" or so in diameter near the base, and they branched out early and often in their life as is evidenced by the number and size of their boughs. These are not "witch's brooms" by any stretch! Add to this the fact that white pines seed best in open areas with a large amount of sunlight, and you can read something else of the forest history of the area. Shawtown was abandoned certainly, but the area around the large cellar hole/foundation seems to have been kept clear for a considerably longer period than the rest of the area. How long was the house that once stood on that foundation inhabited I wonder? *The Sage*

